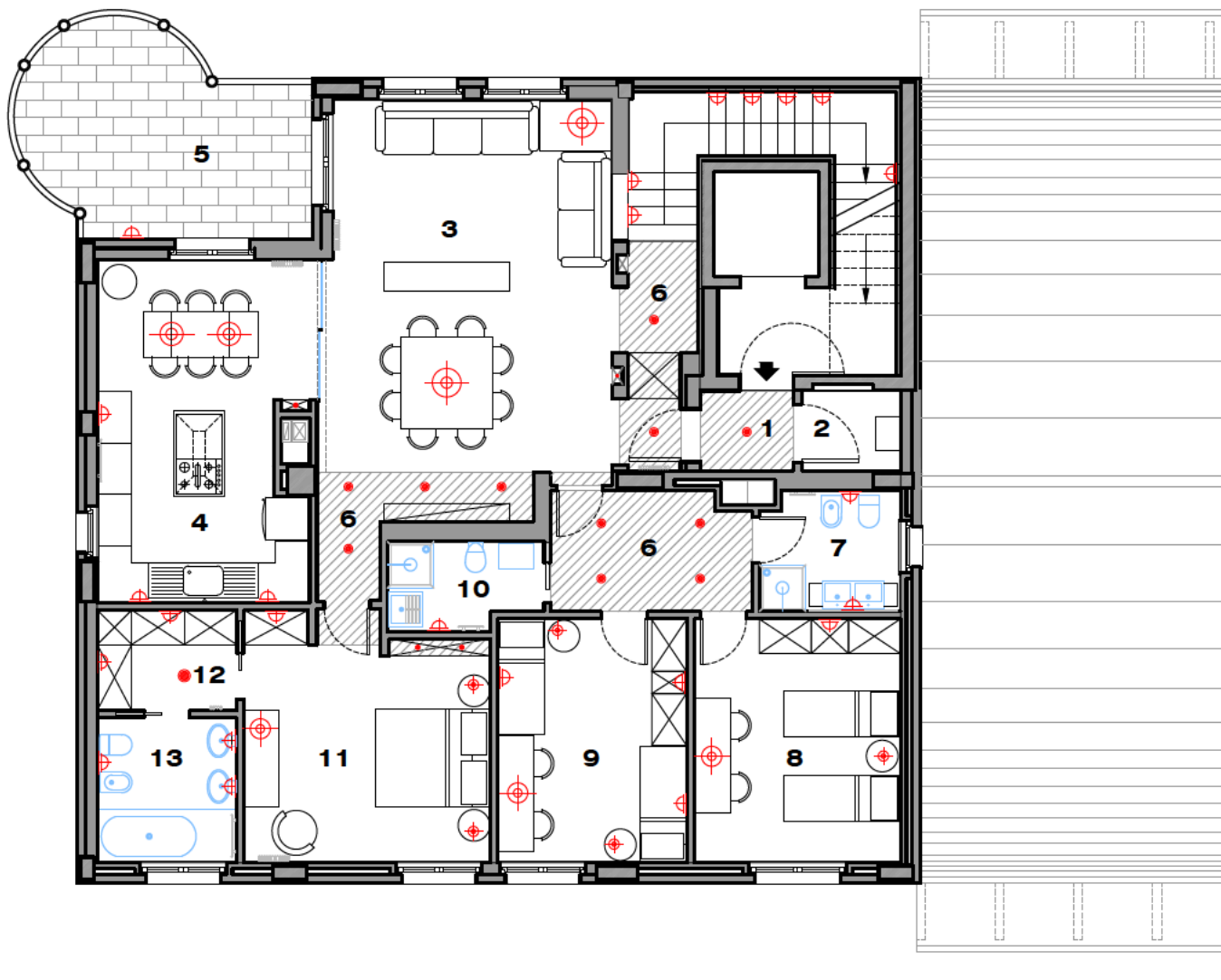


PIANO OTTAVO



- | | | | |
|---|------------------|----|------------------|
| 1 | INGRESSO | 8 | CAMERA |
| 2 | LOCALE CALDAIA | 9 | CAMERA |
| 3 | SOGGIORNO-PRANZO | 10 | BAGNO-LAVANDERIA |
| 4 | CUCINA | 11 | CAMERA PADRONALE |
| 5 | TERRAZZO | 12 | CABINA ARMADI |
| 6 | DISIMPEGNO | 13 | BAGNO |
| 7 | BAGNO | | |